

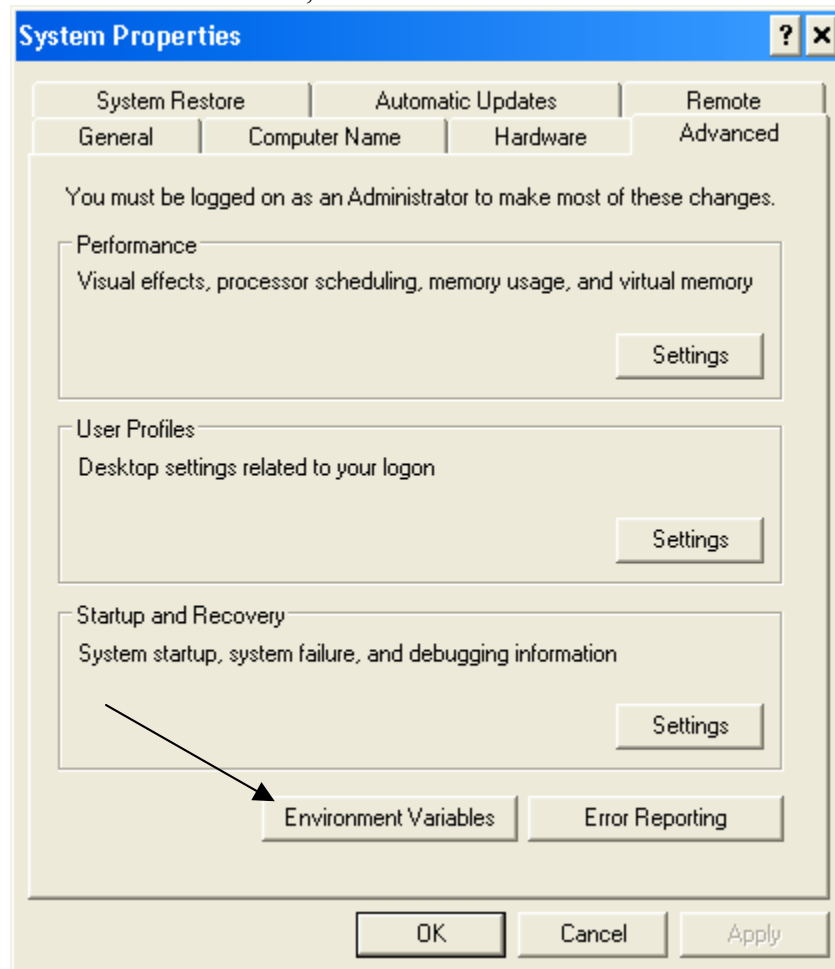
Installing plugins on windows 98/ME:

Copy the dll and ini files to C:\WINDOWS\SYSTEM\Ensoniq\PlugIns

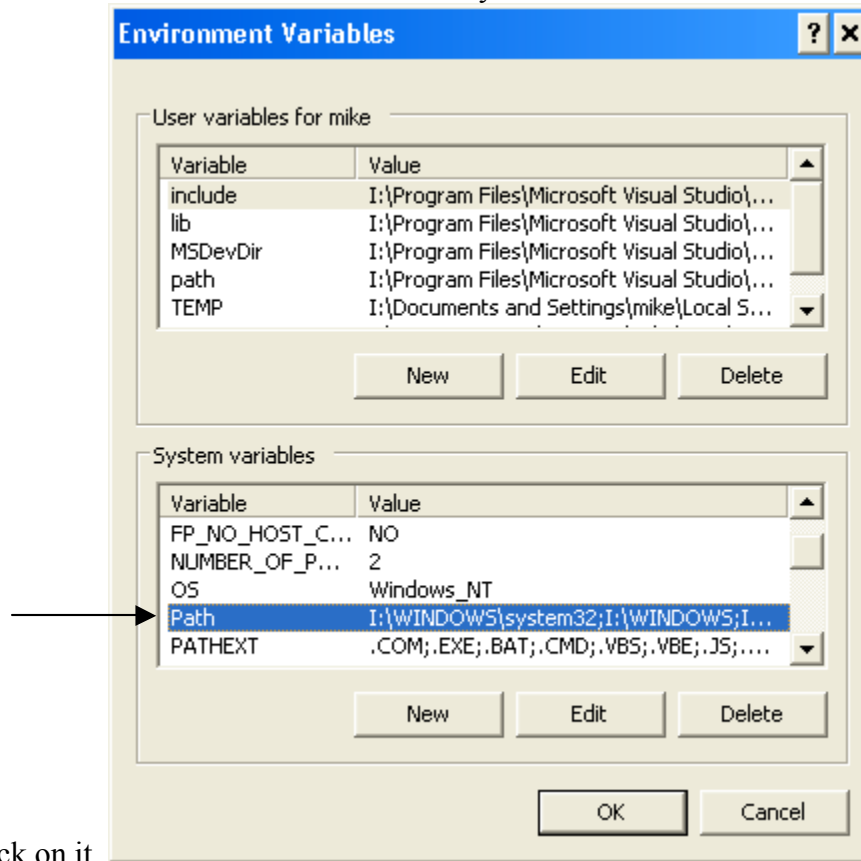
Installing plugins on Windows XP:

- 1) Copy the dll and ini files to C:\WINDOWS\system32\Ensoniq\PlugIns
- 2) Add the path to the plugins to the system path.

- 1) Right click on “My Computer” and select “Properties”
- 2) Go to the advanced tab, and click on “Environment Variables”

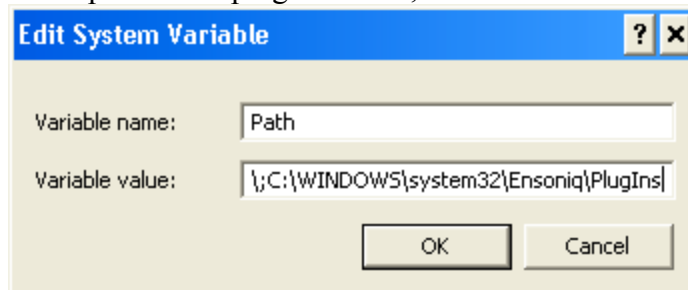


- 3) Find the variable called “Path” in the “System Variables” box and double



click on it.

- 4) Type a semicolon at the end of the list in the box that appears, and then paste in the path to the plugins folder, like so:

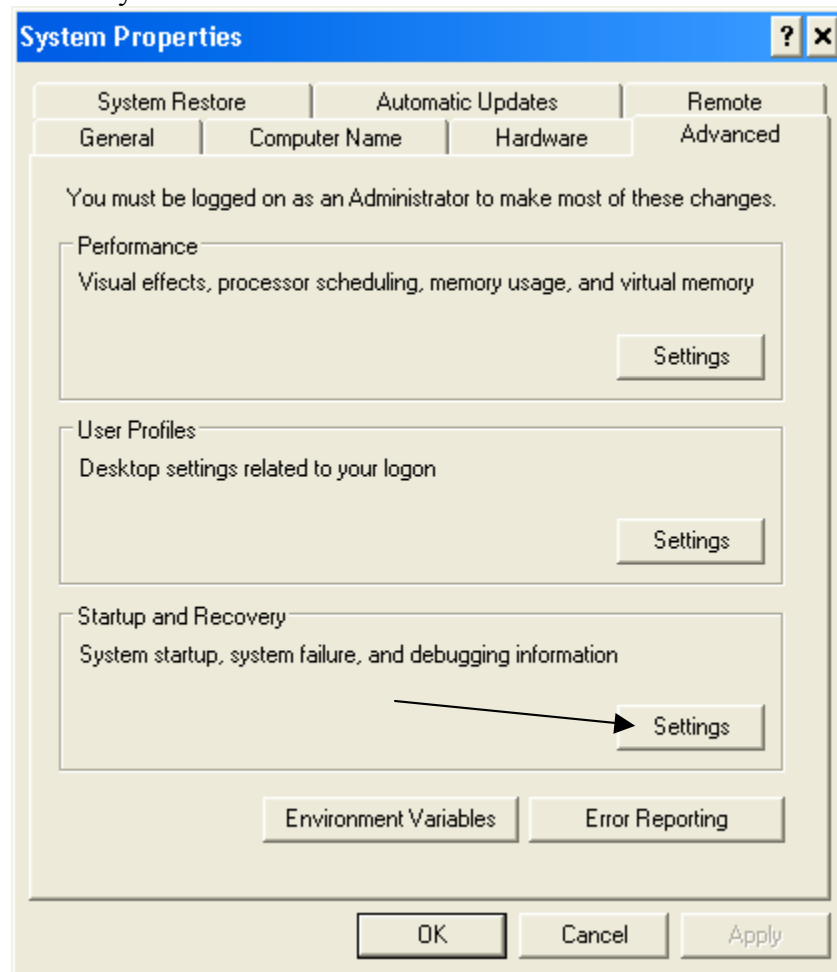


- 5) Click OK, and another OK, and start up PARIS!

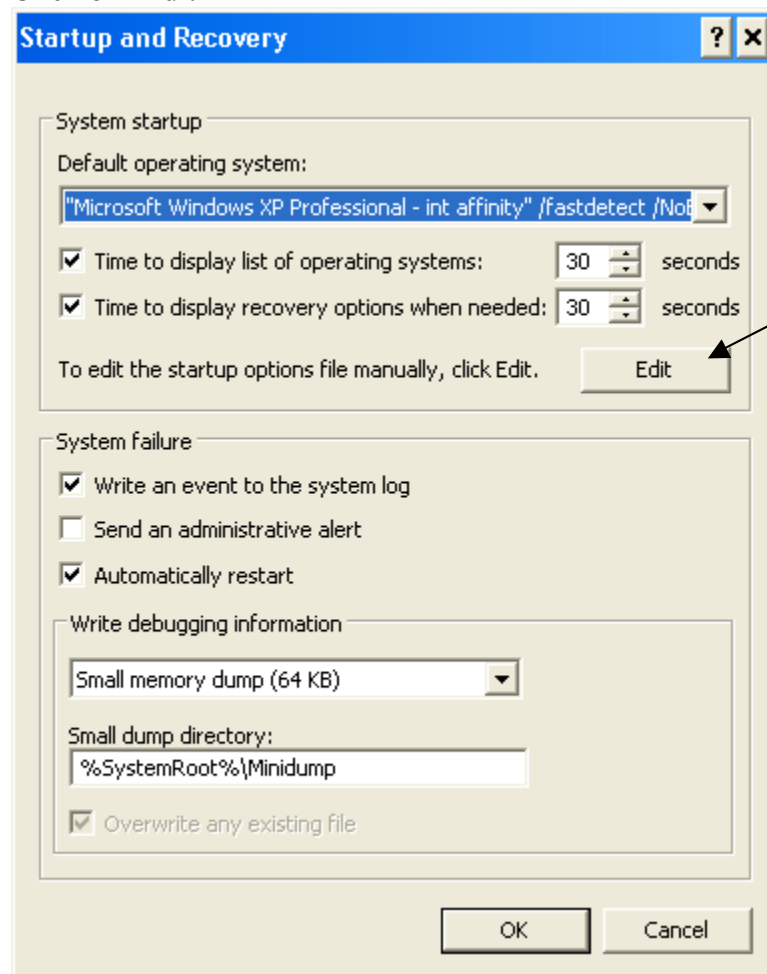
Running PARIS on a dual core CPU under XP

- 1) Add the int affinity switch to boot.ini to force Windows to use the highest numbered CPU for interrupts.
 - 1) Right Click on “My Computer” and select “Properties”

- 2) Go to the “Advanced tab, and click on “Settings” in the “Start up and Recovery” Box.



- 3) Click on “Edit”

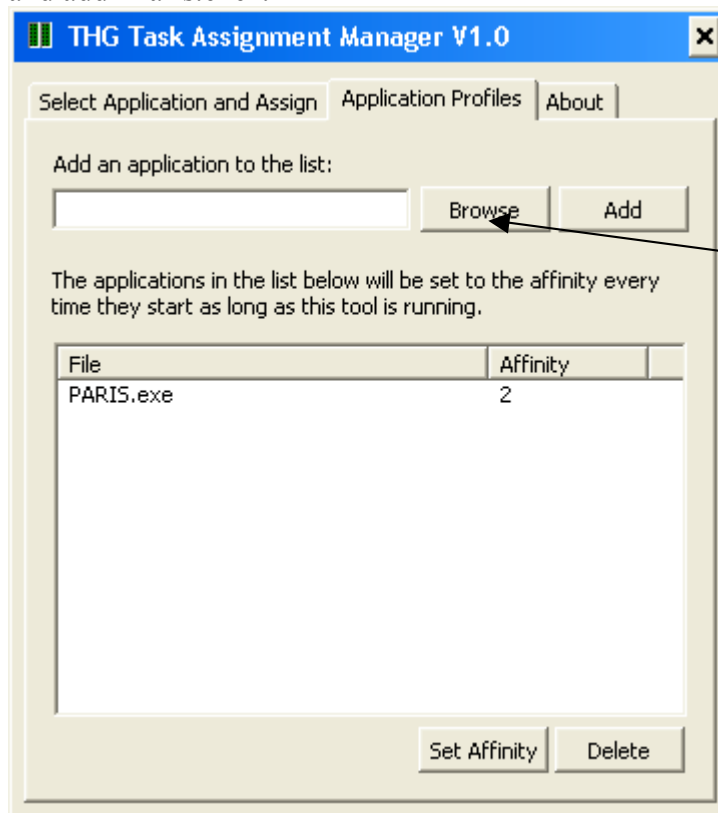


- 4) Notepad will open, showing something like this:
- ```
[boot loader]
timeout=30
default=multi(0)disk(0)rdisk(0)partition(1)\WINDOWS
[operating systems]
multi(0)disk(0)rdisk(0)partition(1)\WINDOWS="Microsoft Windows
XP Professional" /fastdetect
```
- 5) Modify to the text so that the text “/INTAFFINITY” appears after “/fastdetect” in the file. The line should read something like:
- ```
multi(0)disk(0)rdisk(0)partition(1)\WINDOWS="Microsoft Windows
XP Professional" /fastdetect /INTAFFINITY
```
- 6) Save the file and restart Windows.

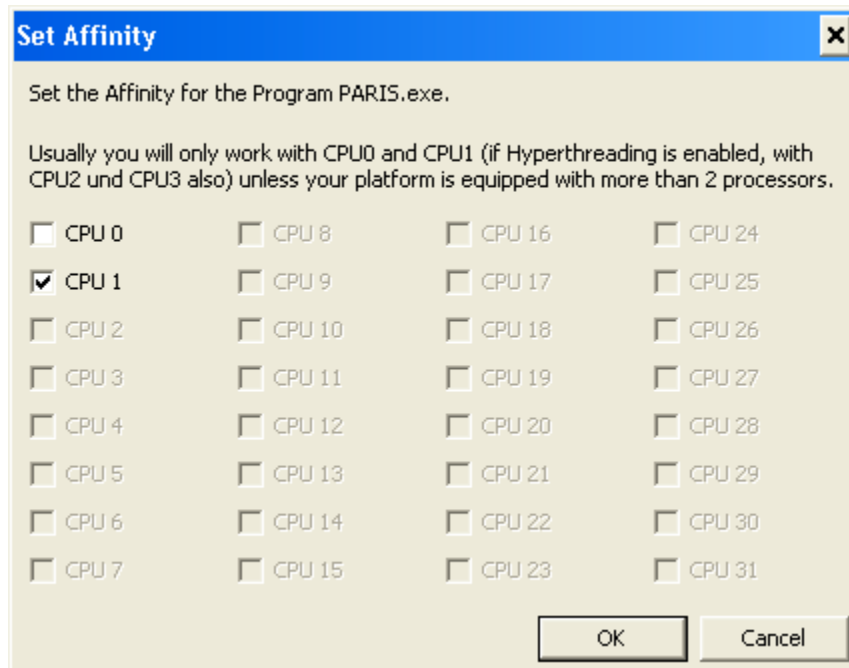
Step 2 – tell windows to run PARIS on the highest numbered CPU only.

- 1) Download a utility called Task Assign from Toms Hardware here:
http://images.tomshardware.com/2004/05/28/getting_more_bang_out_of_your_dual_processing_buck/taskassign.zip

- 2) Unzip the contents into a folder somewhere (the same folder as PARIS would work), and make a shortcut to it on your desktop.
- 3) Run Task Assign. And go to the “Application Profiles” tab and browse to and add “Paris.exe”.



- 4) Double click on PARIS.exe in the lower window and select CPU 1 only.



- 5) Click “OK” and launch PARIS.

- 6) Task assign will remember its settings, but you **MUST** run it every time before launching PARIS to prevent the C16 lockup issue.